



DESIGNSCAPE
CONSULTANCY LTD
Architecture + Urban Design

A solid blue vertical bar on the left side of the page.

CONTENTS

ABOUT THE STUDIO

THE TEAM

SERVICES

WHY US

SAMPLE PROJECTS

CGI IMAGES

INTERIORS

HAND DRAWN SKETCHES

SUSTAINABILITY

ON SITE

INTERNATIONAL OUTLOOK

CLIENT TESTIMONIALS

ABOUT THE STUDIO

Designscape Consultancy Ltd is an architect and urban design practice based in Maidstone, Kent. Designscape has carried out over 525 projects in the 18 years since its formation, in London and throughout the south-east, most of which are residential and highly regarded for their design quality.

We are a dynamic young practise producing high quality, bespoke residential work, employing high calibre designers.

We work with our principles of flow, space, light and air, with an aim to help achieve zero carbon and we strive to incorporate nature to improve health and wellbeing.

CLICK FOR:
[DESIGNSCAPE VIDEO PROMO](#)



THE TEAM



KINGSLEY HUGHES

*Director & Senior Architect
BA(Hons), B.ARCH(NOTM), ARB, RIBA*



CHARN MURPHY-YORK

*Architect (Senior)
BA(Hons), MArch, PGDip, ARB, RIBA*



PANAGIOTA EVELZAMAN

*Architect
DipArch, MSc*



VIKTOR KRAJAN

*Senior Architectural Assistant
Ing. Arch.*



SIMRAN DOVEDI

*Part I Architectural Assistant
BA(Hons)*



JAYNE HEWISH

Office Manager





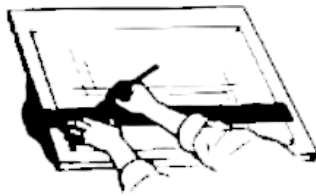
SERVICES



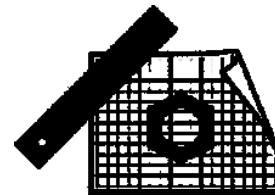
**CLIENT MEETING
& BRIEF**



**PRE-
APPLICATION**



PLANNING



TECHNICAL



ON SITE

WHY US?

OUR SERVICE

Our service is reasonably priced whilst also being of high quality.

WE UNDERSTAND

We are practically minded and know how to minimise build cost whilst still producing high quality designs that work to your brief, therefore adding value to your project.

STAY IN THE LOOP

Each month you will receive a monthly reporting schedule to highlight progress made by us and others throughout the month, keeping you informed of the project programme.

WORKING TOGETHER

We work very closely with our clients to understand their requirements, lifestyle and project outputs and design bespoke schemes to meet your needs.

PLANNING

We have a high track record of gaining planning permission and we have gained good working relationships with many planning boroughs.

SEE THE POTENTIAL

We work to produce high quality images to showcase what your proposal will look like at varying scales and detail.

DESIGN QUALITY

We work with our principles of flow, space, light and air, with an aim to help achieve zero carbon and incorporate nature to improve health at a global, local and detailed scale - a philosophy we believe strongly in at Designscape.

RESIDENTIAL SAMPLE PROJECTS



ST. MARY'S BAY

St. Mary's Bay, Kent

COMPLETION YEAR

Ongoing

DESCRIPTION

85 dwellings, mix of flats and family houses with mixed of tenures.

SCOPE OF WORK

RIBA Work Stages 1-3







VICTORIA ROAD

Littlestone-on-sea, Kent

COMPLETION YEAR

2017

DESCRIPTION

13 dwellings, mix of detached and semi-detached houses of mixed tenure

SCOPE OF WORK

RIBA Work Stages 1-3



HAVILANDS

Wye, Kent

COMPLETION YEAR

2013



DESCRIPTION

57 houses total, of which Designscape Consultancy were responsible for the latter phases of 17 houses

SCOPE OF WORK

RIBA Work Stages 1-4



MAIDSTONE ROAD

Chatham, Kent

COMPLETION YEAR

2019

DESCRIPTION

The proposal was for the demolition of an existing tired house to create a high-end contemporary home

SCOPE OF WORK

RIBA Work Stages 1-7







COMPLETION YEAR

2021

DESCRIPTION

7no. apartments and 2no. houses in an urban area

SCOPE OF WORK

RIBA Work Stages 0-5



PARCHMORE ROAD

Thornton Heath, Croydon





COCKREED LANE

New Romney, Kent

COMPLETION YEAR

Planning Stage

DESCRIPTION

25 dwellings mix of detached, semi-detached, terraced houses, and flat over garages.

We worked closely on this scheme with our clients and a leading housing association using their standard house type floor plans but in an innovative way to create high quality architecture suitable for its setting.

SCOPE OF WORK

RIBA Work Stages 1-3 (ongoing)



DOVER ROAD

Sandwich, Kent

COMPLETION YEAR

Planning Stage

DESCRIPTION

6 semi-detached houses

SCOPE OF WORK

RIBA Work Stages 0-3 (Ongoing)





COMPLETION YEAR

Planning Stage

DESCRIPTION

9 dwellings, mix of semi- detached and terraced houses

SCOPE OF WORK

RIBA Work Stages 1-3



BRAMBLE LANE

Wye, Kent

FULHAM BROADWAY

Fulham, London

COMPLETION YEAR

Speculative 2014

DESCRIPTION

22 Flats over Ground Floor Commercial

SCOPE OF WORK

RIBA Work Stages 1-3



COMMERCIAL SAMPLE PROJECTS



SOUTHBOROUGH LANE BAPTIST CHURCH

Orpington

COMPLETION YEAR

2020

DESCRIPTION

Remodel and extension of an existing church to create a modern an inviting front entrance and community hall

SCOPE OF WORK

RIBA Work Stages 0-6



BEFORE



DESIGN



AFTER

GREEN STREET GREEN BAPTIST CHURCH

Orpington, Kent

COMPLETION YEAR

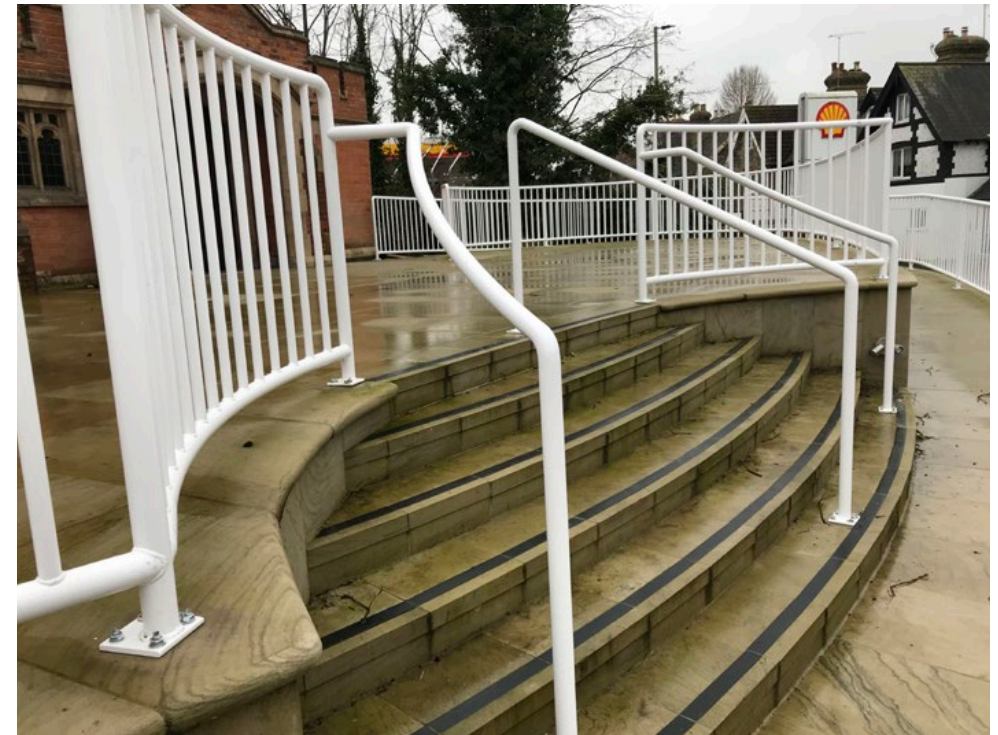
2021

DESCRIPTION

Development of compliant ramp and stairs to make create a more contemporary and inviting accessible entrance to the church.

SCOPE OF WORK

RIBA Work Stages 1-6



HORTON KIRBY

Dartford, Kent

COMPLETION YEAR

2018

DESCRIPTION

Refurbishment and development of new offices.

SCOPE OF WORK

RIBA Work Stages 3-5

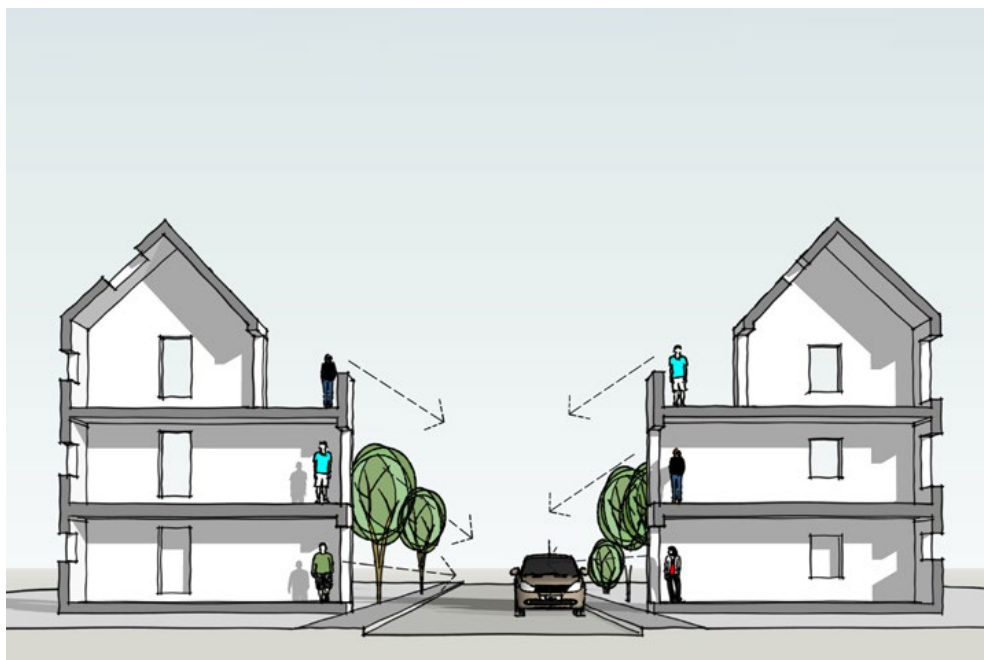


RESIDENTIAL DESIGN GUIDE- LONDON BOROUGH OF REDBRIDGE

We were commissioned by Redbridge Council to assist them in bringing forward their Residential Design Guide SPD which was adopted in 2019.

The key emphasis was on the development of brownfield land and helping ensure the best possible use of that land through medium-to-high density with "intensification" or "densification".

We produced scheme ideas of how this could be achieved and also produced the graphics which referred, and which are incorporated within their final design guidance document.



CGI IMAGES



CGI IMAGES

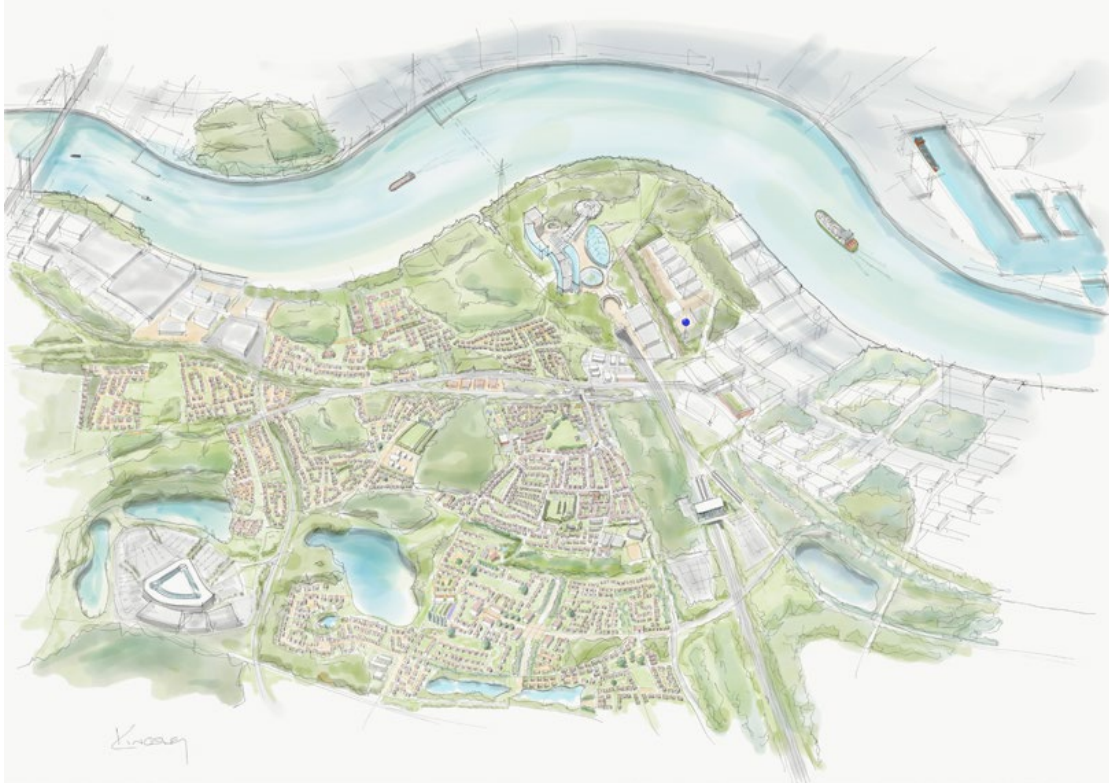


INTERIORS



HAND DRAWN SKETCHES

produced for our schemes



Ebbfleet and Swanscombe



Defining private garden space for apartments scheme



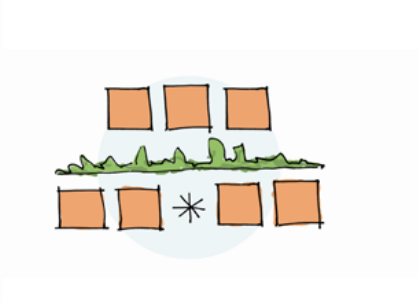
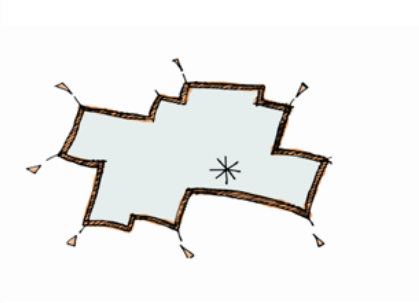
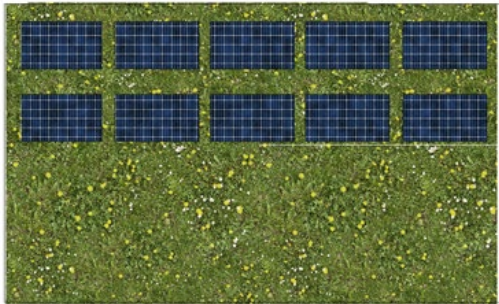
Attention to highways detail

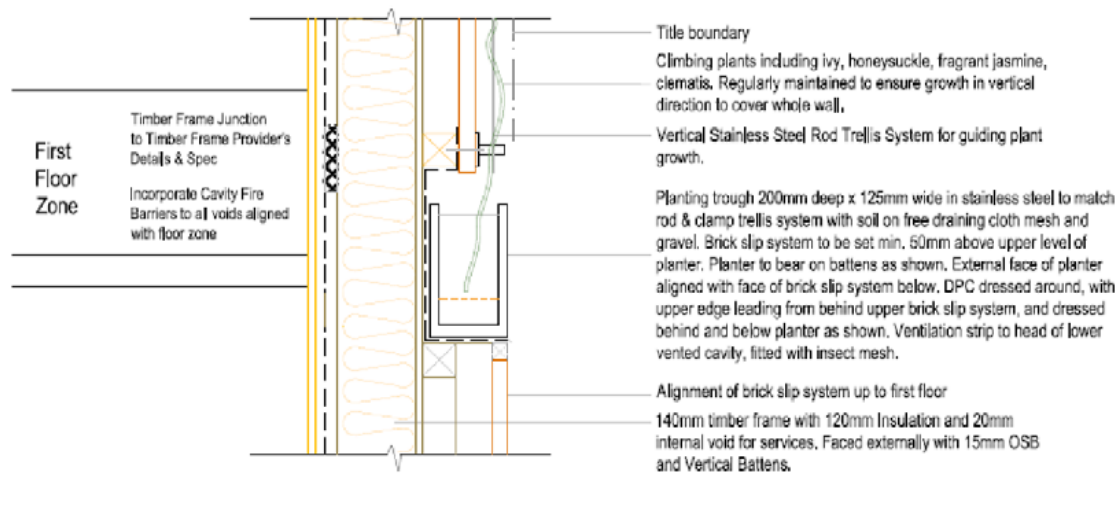
HAND DRAWN SKETCHES

produced for our schemes

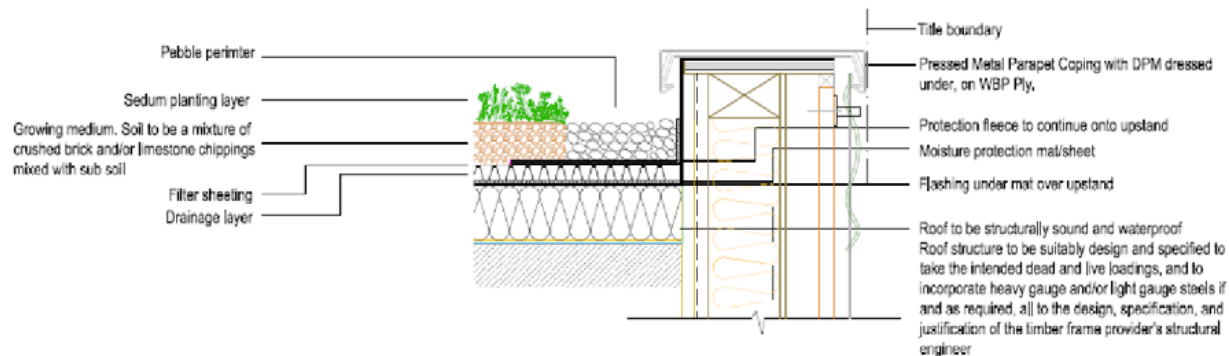


SUSTAINABILITY





DETAILED SECTION OF PLANTING TROUGH AT INTERFACE OF GROUND FLOOR LEVEL AND FIRST FLOOR LEVEL



SEDUM GREEN ROOF SECTION ON GREEN WALL SIDE - SOUTH FACING
SIMILAR TO STANDARD DETAIL BUT WITH GREEN WALL AGAINST FACE



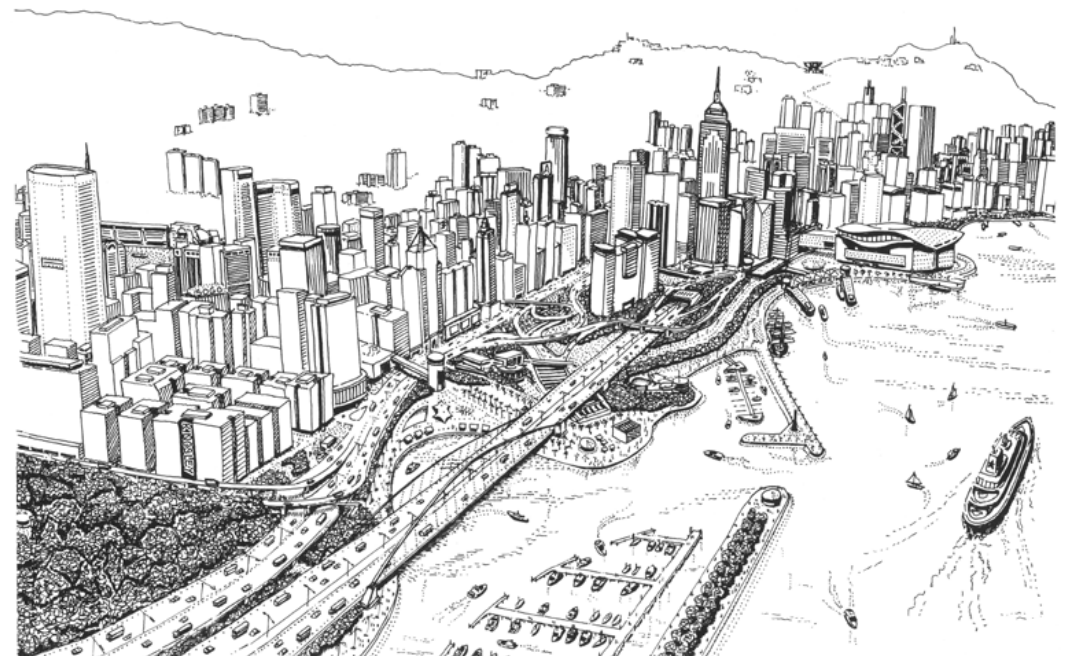
ON SITE





INTERNATIONAL OUTLOOK

At Designscape Consultancy we maintain a strong international outlook in our work. The founder, Kingsley Hughes, has gained many years of experience from working overseas, in Sydney and in Hong Kong where he worked on many residential schemes and was a part-time lecturer at the University of Hong Kong. He also was the Urban Design advisor to the Hong Kong Government and the project manager of the Government's "Urban Design Guidelines for Hong Kong". The other members of our team also bring a strong international outlook and experience: Viktor in Slovakia, Panagiota in Greece and Piotr Pawliszyn in Poland. Furthermore, Charn Murphy-York carries out work in Africa through her charity PIFTA, which is featured overleaf.



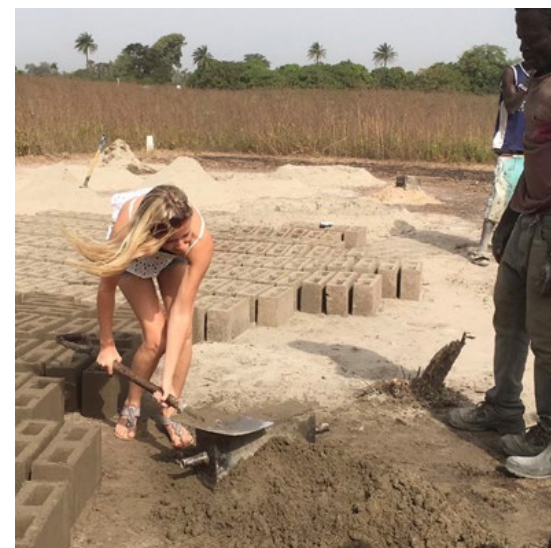
PIFTA – PAYING IT FORWARD TO AFRICA

One of our senior staff members, Charn Murphy-York set up and runs PIFTA with her father to fund and deliver various charitable services in The Gambia, West Africa, to inspire and improve the lives of many.

The charity has a strong focus on aiding sustainable change through student sponsorship, business start-ups, food and clothing donations and construction of business premises and homes.

Annual trips to the region and local fundraising assist in social and economic projects, with a focus on education and long term growth.

More info can be found at www.pifta.co.uk





CLIENT TESTIMONIALS

“ I can't recommend Designscape Consultancy enough. They have been absolutely fantastic in every scheme that they have produced for us. They've been accommodating in their changes when we have needed support and they have fought and won appeals for us on more than one occasion. Keep up the good work guys. ”

Jamie Bartholomew

“ I have used Designscape for many projects over the last few years and have found them very professional and very helpful. Also I find the designs they come up with very imaginative. We are working together on one of my schemes at the moment and would just like to thank Designscape Consultancy for their hard work. ”

Simon Niblett

“ Designscape Consultancy were recommended to me by a friend. I'm so glad that they were, as they were exceptional from start to finish, and at times went out of their way to help, throughout the build to the end. The drawings were great and exactly what we were looking for. I will be passing their details on to my friends and family. Thanks for a great service. ”

Luke Wallond

“ I don't write reviews very often, but in this case I thought it's fully justified. Designscape have made a dream into a reality with their fantastic foresight and knowledge. I can't thank them enough. Along with the planning, they've been supportive the whole way, even down to recommending the builders that I'm now currently using. ”

Designscape have since worked on a commercial property I had. They were quick to come up with a fantastic design of a three storey block of flats incorporating 5 x 2 beds. I thought the council wouldn't approve three storeys, but Designscape reassured me, and it was approved unanimously by committee. I shouldn't have questioned their knowledge. Thank you.

Robert Rabjohns



DESIGNSCAPE
CONSULTANCY LTD
Architecture + Urban Design

MAY 2022