





# CONTENTS

ABOUT THE STUDIO

THE TEAM

SERVICES

WHY US

CLIENT TESTIMONIALS

SAMPLE PROJECTS

CGI IMAGES

INTERIORS

HAND DRAWN SKETCHES

SUSTAINABILITY

ON SITE

INTERNATIONAL OUTLOOK

# ABOUT THE STUDIO

Designscape Consultancy Ltd is an architect and urban design practice which has carried out over 550 projects since its formation in 2004.

These projects are located in London and throughout the south-east, and most of them are residential and highly regarded for their design quality.

We are a dynamic young practise producing high quality work and employing high calibre designers.

We work with our principles of flow, space, light and air, with an aim to help achieve zero carbon and we strive to incorporate nature to improve health and wellbeing.

CLICK FOR:  
[DESIGNSCAPE VIDEO PROMO](#)



# THE TEAM



Kingsley Hughes  
BA(Hons) B.Arch RIBA ARB  
Director



Charn Murphy-York  
BA(Hons) MArch PGDip RIBA ARB  
Associate Architect



Panagiota Evelzaman  
Dip Arch. MSc  
Architect



Viktor Krajan  
Ing. Arch.  
Senior Architectural Assistant



Simran Dovedi  
Post Part 1  
Architectural Assistant



Jayne Hewish  
Office Manager



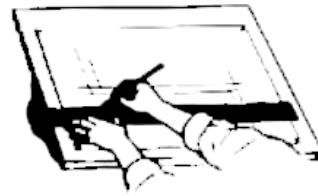
# SERVICES



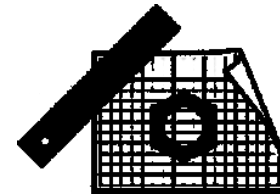
CLIENT MEETING &  
BRIEF



PRE-APPLICATION



PLANNING



TECHNICAL



ON SITE

# WHY US?

## We Understand

We are practically minded and know how to produce high quality, eco-friendly designs in a cost-effective way, that work to your brief, therefore adding value to your project.

## Working Together

We work very closely with our clients regarding the project outputs and we design bespoke schemes to meet your needs. We are also practically minded, and know how to minimise build cost whilst still producing high quality designs that work to your brief therefore creating further value to your project.

## Stay in the loop

Each month you will receive a monthly reporting schedule to highlight progress made by us and others throughout the month, keeping you informed of the project programme.

## Planning

We have a strong track record of gaining planning permission and have gained a good working relationship with many planning boroughs. We also work alongside various private planners, who can also act as agents and produce high quality planning statements, if necessary.

## See the potential

We can produce high quality images to showcase what your proposal will look like at varying scales and detail.

## Design Quality

We work with our principles of creating high quality projects including maximising flow, space, light and air, alongside our exploration of scale, forms and materiality to design high quality and spacious homes that far exceed typical market housing. This also helps in negotiating the way through the planning process

## Climate Initiative

We aim to help achieve zero-carbon within all of our projects by exploring operational energy, embodied energy, and passive strategies to futureproof new homes. We also aim to incorporate nature to improve health, at a global, local and detailed scale.

# TESTIMONIALS

“

”

I don't write reviews very often, but in this case I thought it's fully justified. Designscape have made a dream into a reality with their fantastic foresight and knowledge. I can't thank them enough. Along with the planning, they've been supportive the whole way, even down to recommending the builders that I'm now currently using.

Designscape have since worked on a commercial property I had. They were quick to come up with a fantastic design of a three storey block of flats incorporating 5 x 2 beds. I thought the council wouldn't approve three storeys, but Designscape reassured me, and it was approved unanimously by committee. I shouldn't have questioned their knowledge. Thank you.

----

“

”

I can't recommend Designscape Consultancy enough. They have been absolutely fantastic in every scheme that they have produced for us. They've been accommodating in their changes when we have needed support and they have fought and won appeals for us on more than one occasion. Keep up the good work guys.

----

“

”

I have used Designscape for many projects over the last few years and have found them very professional and very helpful. Also I find the designs they come up with very imaginative. We are working together on one of my schemes at the moment and would just like to thank Designscape Consultancy for their hard work.

----

“

”

Designscape Consultancy were recommended to me by a friend. I'm so glad that they were, as they were exceptional from start to finish, and at times went out of their way to help, throughout the build to the end. The drawings were great and exactly what we were looking for.

I will be passing their details on to my friends and family.

Thanks for a great service.

----



# RESIDENTIAL SAMPLE PROJECTS





# ST MARYS BAY

St. Mary's Bay, Kent

## COMPLETION YEAR

Ongoing

## DESCRIPTION

85 dwellings, mix of flats and family houses with mixed of tenures.

## SCOPE OF WORK

RIBA Work Stages 1-3













# VICTORIA ROAD

Littlestone-on-sea, Kent

## COMPLETION YEAR

2017

## DESCRIPTION

13 dwellings, mix of detached and semi-detached houses of mixed tenure

## SCOPE OF WORK

RIBA Work Stages 1-3



# HAVILANDS

Wye, Kent

COMPLETION YEAR

2013



## DESCRIPTION

57 houses total, of which Designscape Consultancy were responsible for the latter phases of 17 houses

## SCOPE OF WORK

RIBA Work Stages 1-4







# MAIDSTONE ROAD, CHATHAM

Chatham, Kent

## COMPLETION YEAR

2019

## DESCRIPTION

The proposal was for the demolition of an existing tired house to create a high-end contemporary home

## SCOPE OF WORK

RIBA Work Stages 1-7









**COMPLETION YEAR**  
2021

**DESCRIPTION**  
7 new apartments + 2 family homes  
within a suburban area of Croydon

**SCOPE OF WORK**  
RIBA Work Stages 1-5



## PARCHMORE ROAD

Thornton Heath, Croydon







## COCKREED LANE

New Romney, Kent

### COMPLETION YEAR

Ongoing

### DESCRIPTION

25 dwellings mix of detached, semi-detached, terraced houses, and flat over garages.

We worked closely on this scheme with our clients and a leading housing association using their standard house type floor plans but in an innovative way to create high quality architecture suitable for its setting.

### SCOPE OF WORK

RIBA Work Stages 1-3 (ongoing)



# DOVER ROAD

Sandwich, Kent

## COMPLETION YEAR

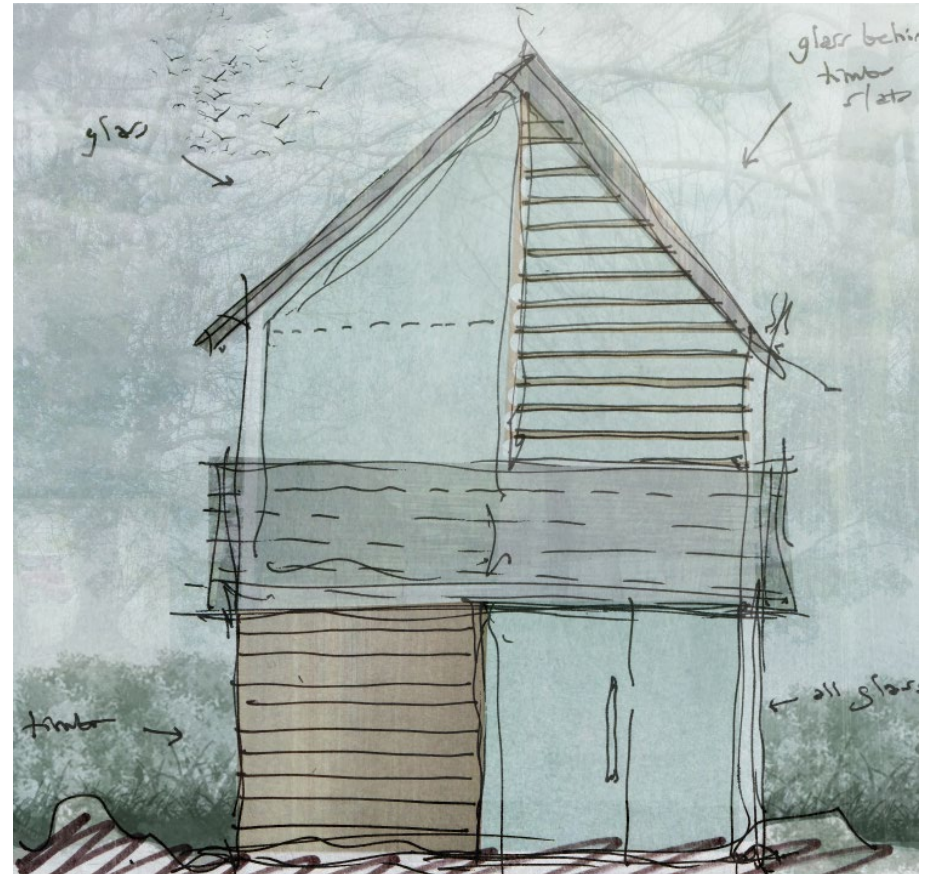
Ongoing

## DESCRIPTION

6 semi-detached family homes.

## SCOPE OF WORK

RIBA Work Stages 0-3 (ongoing)







### COMPLETION YEAR

Ongoing - planning stage

### DESCRIPTION

9 dwelling, mix of semi-detached & terraces houses

### SCOPE OF WORK

RIBA Work Stages 0-3 (ongoing)



## BRAMBLE LANE

Wye, Kent

# FULHAM BROADWAY

Fulham, London

## COMPLETION YEAR

Speculative 2014

## DESCRIPTION

22 flats over ground floor commercial

## SCOPE OF WORK

RIBA Work Stages 1-3





# COMMERCIAL SAMPLE PROJECTS





# SOUTHBOROUGH LANE BAPTIST CHURCH

Orpington

## COMPLETION YEAR

2020

## DESCRIPTION

Remodel and extension of an existing church to create a modern and inviting social and communal space, plus new entrance.

## SCOPE OF WORK

RIBA Work Stages 0-7



BEFORE



DESIGN



AFTER



# GREEN STREET GREEN BAPTIST CHURCH

Orpington, Kent

## COMPLETION YEAR

2021

## DESCRIPTION

Development of compliant ramp and stairs to make create a more contemporary and inviting accessible entrance to the church.

## SCOPE OF WORK

RIBA Work Stages 0-7





# RAILWAY ARCHES

London Bridge, London

## COMPLETION YEAR

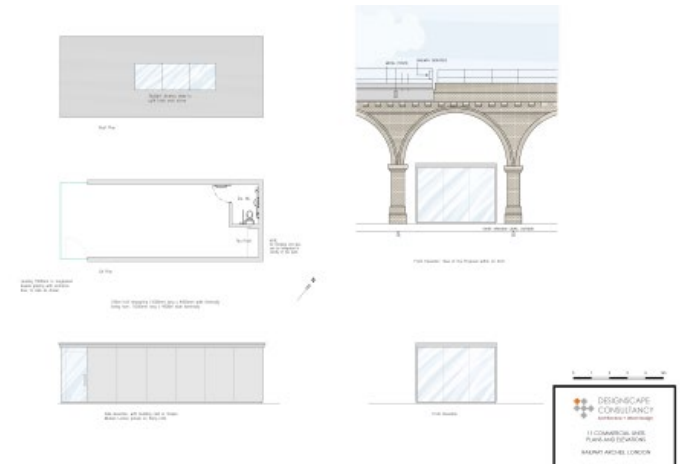
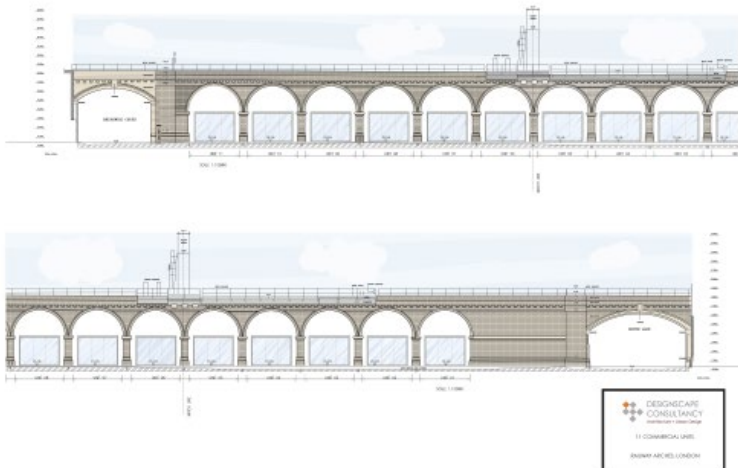
2017 (speculative)

## DESCRIPTION

New commercial office pods within Railway Arches, near London Bridge

## SCOPE OF WORK

RIBA Work Stages 0-3



# HORTON KIRBY

Dartford, Kent

## COMPLETION YEAR

2018

## DESCRIPTION

Refurbishment and development of new offices

## SCOPE OF WORK

RIBA Work Stages 2-5





# BEECHMORE CARE HOME

Bromley, Kent

## COMPLETION YEAR

Ongoing

## DESCRIPTION

New Extensions to improve accessibility, accommodation and create a new entrance at a popular care home in Bromley.

## SCOPE OF WORK

RIBA Work Stages 0-7

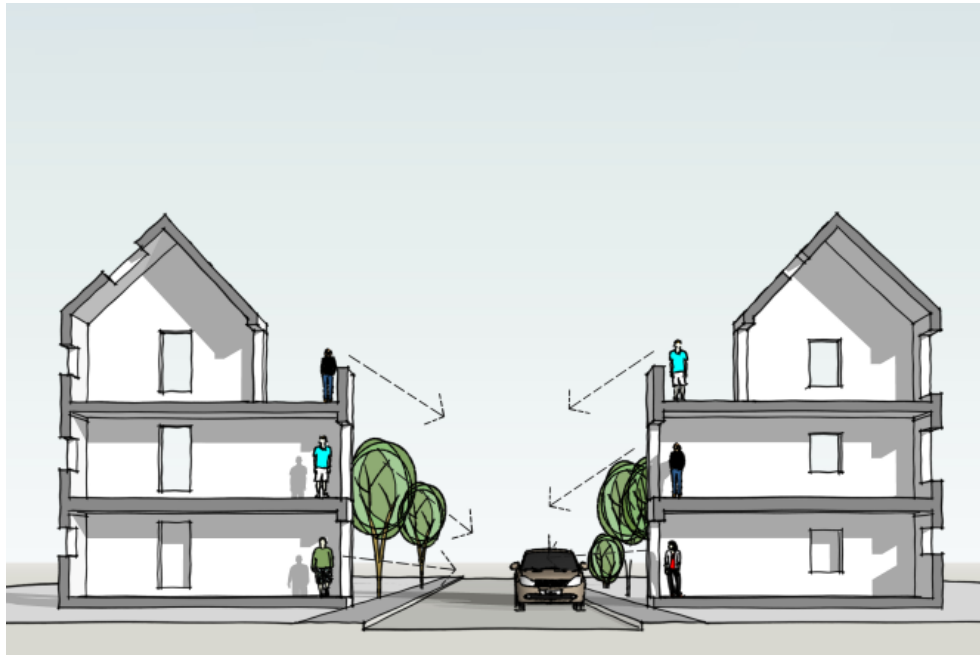


# RESIDENTIAL DESIGN GUIDE- LONDON BOROUGH OF REDBRIDGE

We were commissioned by Redbridge Council to assist them in bringing forward their Residential Design Guide SPD which was adopted in 2019.

The key emphasis was on the development of brownfield land and helping ensure the best possible use of that land through medium-to-high density with “intensification” or “densification”.

We produced scheme ideas of how this could be achieved and also produced the graphics which referred, and which are incorporated within their final design guidance document.





# CGI IMAGES





# CGI IMAGES



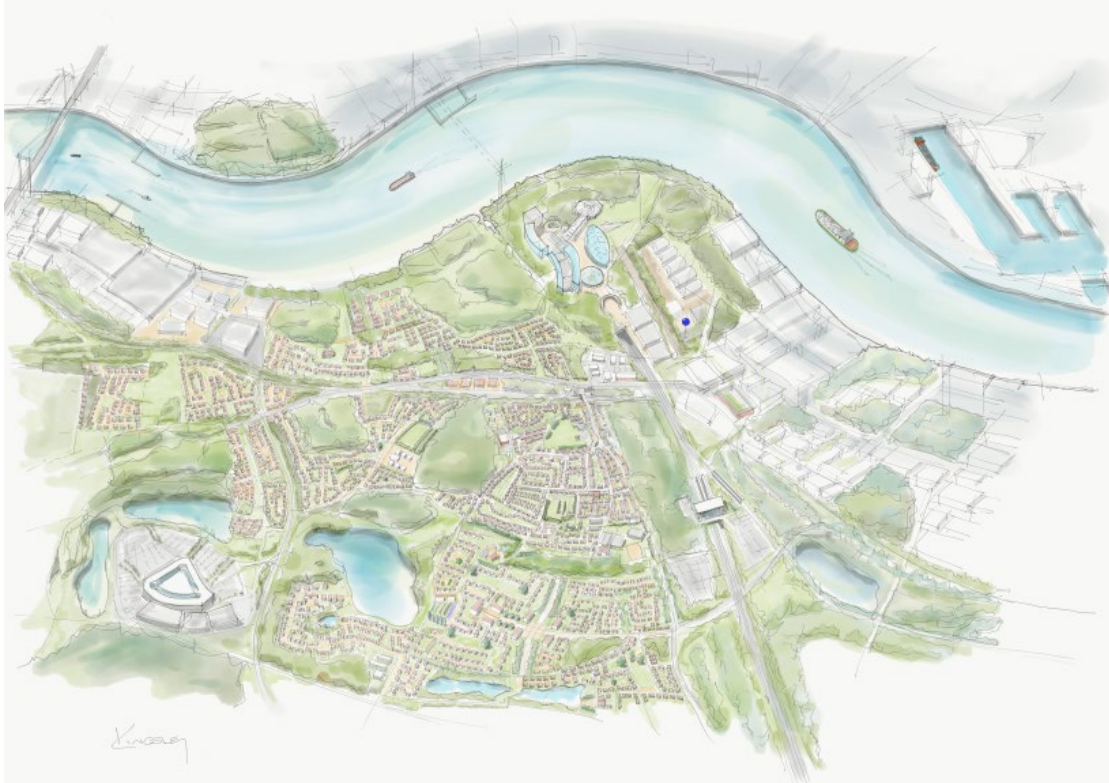


# INTERIORS



# HAND DRAWN SKETCHES

produced for our schemes



*Ebbfleet and Swanscombe*



*Defining private garden space for apartments scheme*



*Attention to highways detail*



produced for our schemes



# DESIGNSCAPE'S CLIMATE INITIATIVE

## OPERATIONAL ENERGY



### RENEWABLES

WE IMPLEMENT RENEWABLE SOURCES OF ELECTRICITY AND HEATING WITHIN OUR DESIGNS, INCLUDING SOLAR AND HEAT PUMPS.

### VENTILATION & HEAT RECOVERY

WE ENCOURAGE THE USE OF MVHR SYSTEMS TO PROVIDE FRESH, CLEAN AIR, AT REASONABLE TEMPERATURES.

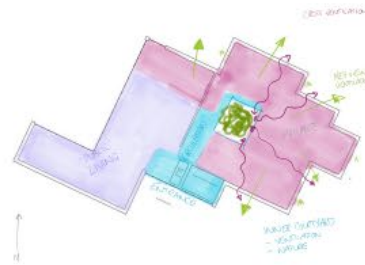


## HEALTH & WELLBEING

### HEALTH METRICS

IN EVERY PROJECT, WE CONSIDER OUR HEALTH METRICS OF:

- DAYLIGHT
- VIEWS TO NATURE
- FRESH AIR
- LANDSCAPE FEATURES



## STUDIO



### DAIRY-FREE

WE UNDERSTAND ONE OF THE BIGGEST CHANGES YOU CAN MAKE FOR THE CLIMATE IS WHAT YOU CONSUME. THAT'S WHY FOR THE LAST 5 YEARS, WE'VE BEEN A DAIRY FREE OFFICE

### PLANTS

WE ENCOURAGE NATURE IN OUR WORKPLACE WITH POTTED PLANTS



### REMOTE WORKING

WE ENCOURAGE REMOTE WORKING, THEREBY REDUCING EMISSIONS FROM OUR STAFF'S COMMUTES

## FABRIC FIRST & EMBODIED ENERGY

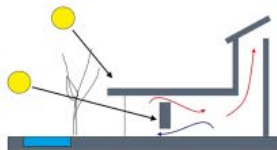


### MATERIALITY

WE ENCOURAGE MORE SUSTAINABLE MATERIALS WITH LOWER EMBODIED ENERGY, AND METHODS TO INCREASE INSULATION AND HEAT LOSS.

### FABRIC FIRST

WE APPROACH EACH DESIGN WITH FABRIC FIRST, TO MAXIMISE AIR TIGHTNESS, NATURAL VENTILATION, OPTIMISE SOLAR GAINS AND USE HIGH INSULATION



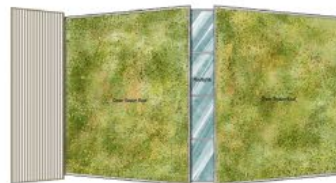
## BIODIVERSITY & NATURE BASED SOLUTIONS

### BIODIVERSITY

WE SIGNIFICANTLY ENHANCE A SITE'S BIODIVERSITY NET GAIN AND GREEN COVER COMPARED TO PRE-DEVELOPMENT LEVELS, IN ALL OF OUR PROJECTS.

### GREEN FEATURES

WE IMPLEMENT GREENERY WHEREVER POSSIBLE INCLUDING GREEN WALLS AND ROOFS



Roof Plan

## WATER MANAGEMENT



### RAINWATER HARVESTING

WE HAVE A COMMITMENT TO MINIMISE WATER DEMAND BY HARVESTING RAINWATER AND RECYCLING AND REUSING WATER ON SITE.

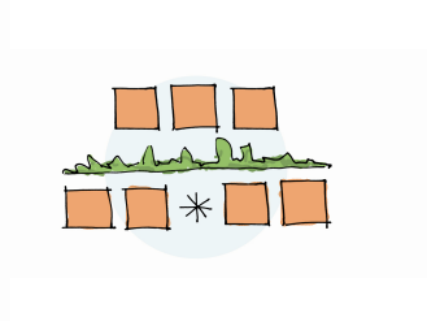
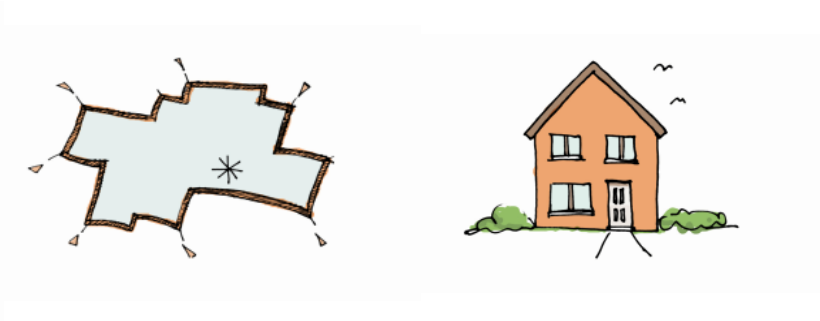
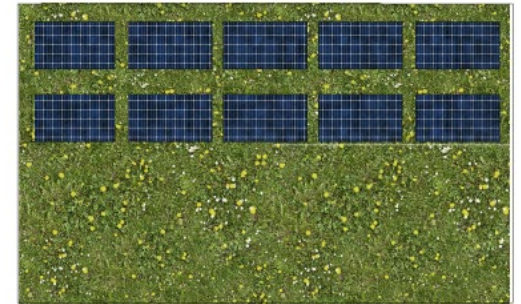
### REDUCING WATER USAGE TARGETS

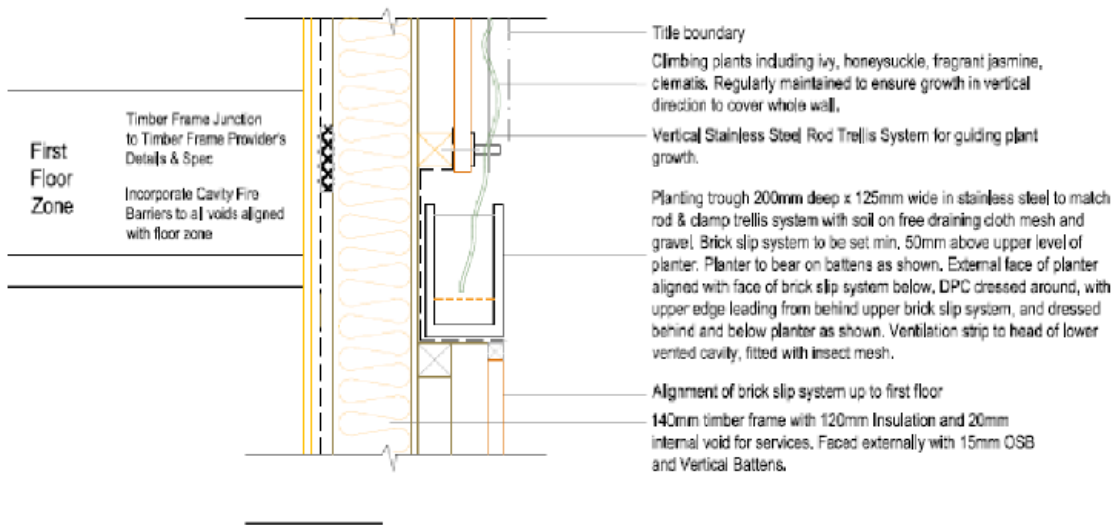
WE RESEARCH PRODUCTS AND SYSTEMS WHICH USE LOWER AMOUNTS OF WATER, WITH AN AIM OF USING 40% LESS WATER THAN THE CURRENT BUILDING REGS

**75L** P/P P/D  
TARGET

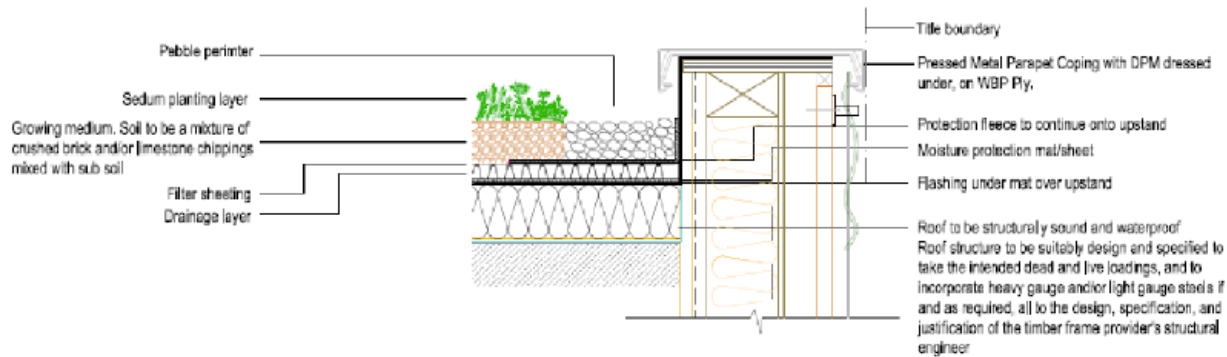


# SUSTAINABILITY





DETAILED SECTION OF PLANTING TROUGH AT INTERFACE OF GROUND FLOOR LEVEL AND FIRST FLOOR LEVEL



SEDUM GREEN ROOF SECTION ON GREEN WALL SIDE - SOUTH FACING SIMILAR TO STANDARD DETAIL BUT WITH GREEN WALL AGAINST FACE





# ON SITE



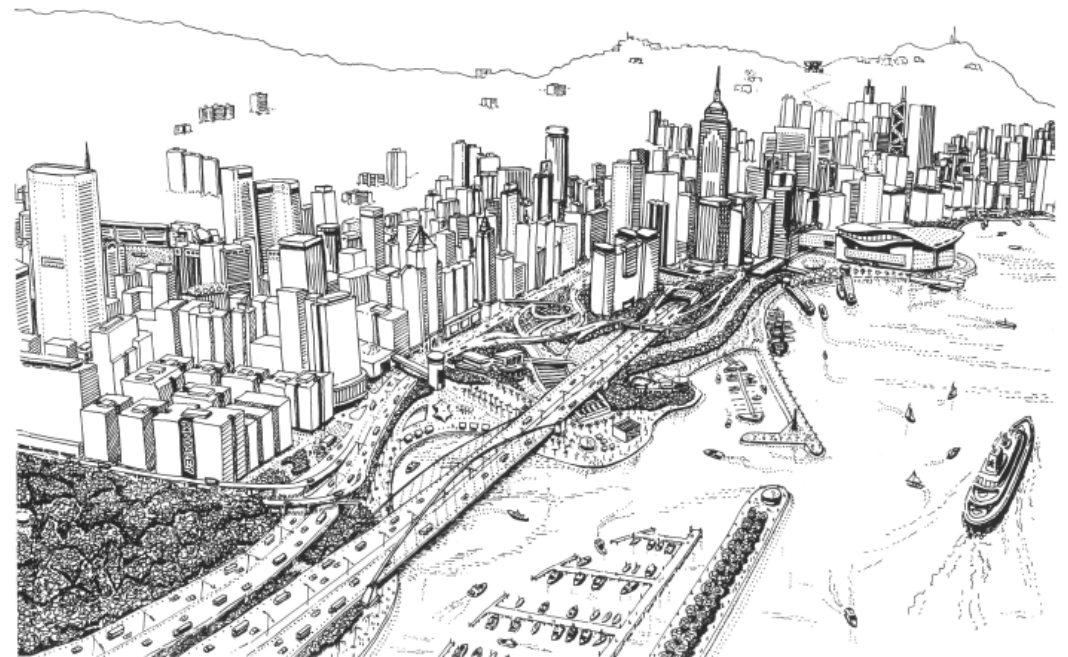






## INTERNATIONAL OUTLOOK

At Designscape Consultancy we maintain a strong international outlook in our work. The founder, Kingsley Hughes, has gained many years of experience from working overseas, in Sydney and in Hong Kong where he worked on many residential schemes and was a part-time lecturer at the University of Hong Kong. He also was the Urban Design advisor to the Hong Kong Government and the project manager of the Government's "Urban Design Guidelines for Hong Kong". The other members of our team also bring a strong international outlook and experience: Viktor in Slovakia, Panagiota in Greece and Piotr Pawliszyn in Poland. Furthermore, Charn Murphy-York carries out work in Africa through her charity PIFTA, which is featured overleaf.





# PIFTA – PAYING IT FORWARD TO AFRICA

One of our senior staff members, Charn Murphy-York set up and runs PIFTA with her father to fund and deliver various charitable services in The Gambia, West Africa, to inspire and improve the lives of many.

The charity has a strong focus on aiding sustainable change through student sponsorship, business start-ups, food and clothing donations and construction of business premises and homes.

Annual trips to the region and local fundraising assist in social and economic projects, with a focus on education and long term growth.

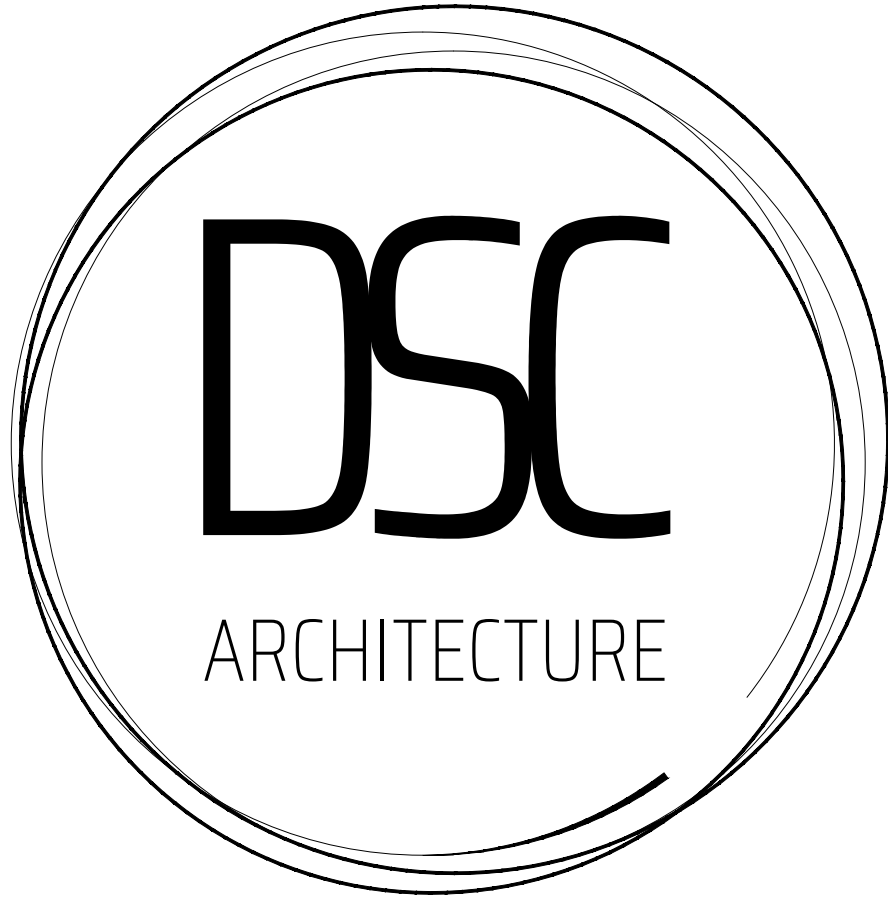
More info can be found at [www.pifta.co.uk](http://www.pifta.co.uk)











SEPTEMBER 2022