



# HOUSEHOLDER BROCHURE

# CONTENTS

ABOUT THE STUDIO

THE TEAM

SERVICES

WHY US

SAMPLE PROJECTS

CGI IMAGES

INTERIORS

HAND DRAWN SKETCHES

SUSTAINABILITY

ON SITE

CLIMATE INITIATIVE

CLIENT TESTIMONIALS

INTERNATIONAL OUTLOOK

# ABOUT THE STUDIO

Designscape Consultancy Ltd is an architect and urban design practice which has carried out over 550 projects since its formation in 2004.

These projects are located in London and throughout the south-east, and most of them are residential and highly regarded for their design quality.

We are a dynamic young practise producing high quality work and employing high calibre designers.

We work with our principles of flow, space, light and air, with an aim to help achieve zero carbon and we strive to incorporate nature to improve health and wellbeing.

CLICK FOR:  
[DESIGNSCAPE VIDEO PROMO](#)



# THE TEAM



Kingsley Hughes  
BA(Hons) B.Arch RIBA ARB  
Director



Charn Murphy-York  
BA(Hons) MArch PGDip RIBA ARB  
Associate Architect



Panagiota Evelzaman  
Dip Arch. MSc  
Architect



Viktor Krajan  
Ing. Arch.  
Senior Architectural Assistant



Simran Dovedi  
Post Part 1  
Architectural Assistant



Jayne Hewish  
Office Manager

# SERVICES

Designscape Architecture designs high quality, eco-friendly buildings which make a positive impact on homes, people and the environment.

We work with homeowners to explore their brief and project outcomes and deliver bespoke schemes through a highly collaborative and creative design process.

We have helped transform our clients lifestyle requirements and visions into reality. We work with our principles of flow, space, light and air, and incorporate nature to improve health and wellbeing. As part of our climate initiative, we aim to help achieve zero-carbon in all of our projects.

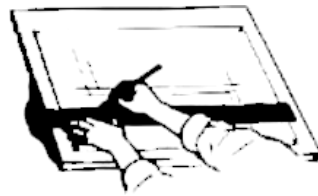
Designscape can provide a full service, working with you from the very beginning to seeing the project through to completion.



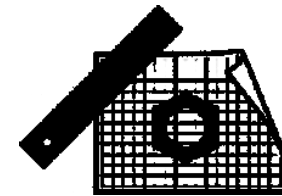
CLIENT MEETING &  
BRIEF



PRE-APPLICATION



PLANNING



TECHNICAL



ON SITE

# WHY US?

## We Understand

We strive to understand your lifestyle and requirements to offer a bespoke home for you and your family.

## Working Together

We work very closely with our clients to understand their requirements and project output and design bespoke schemes to meet your needs. We are practically minded, and know how to minimise build cost whilst still producing high quality designs that work to your brief therefore adding value to your project.

## Stay in the loop

Each month you will receive a monthly reporting schedule to highlight progress made by us and others throughout the month, keeping you informed of the project programme.

## Planning

We have a high track record of gaining planning permission and have gained a good working relationship with many planning boroughs. We also work alongside various private planners, who can also act as agent and produce high quality planning statements, if necessary.

## See the potential

We can produce high quality images to showcase what your proposal will look like at varying scales and detail.

## Design Quality

We work with our principles of maximising flow, space, light and air, alongside our exploration of scale, forms and materiality to design the best scheme for your home.

## Climate Initiative

We aim to help achieve zero-carbon within all of our projects by exploring operational energy, embodied energy, and passive strategies to futureproof your home. We also aim to incorporate nature to improve health, at a global, local and detailed scale.

# SAMPLE PROJECTS



# OUR PROJECTS

## MAIDSTONE ROAD

Chatham, Kent

### COMPLETION YEAR

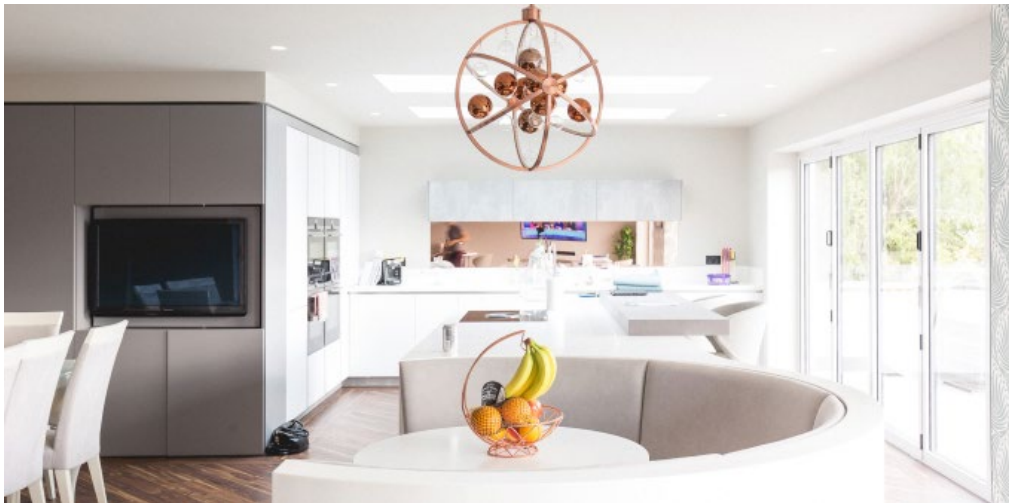
2019

### SCOPE OF WORK

RIBA Work Stages 1-7

### DESCRIPTION

The proposal was for the demolition of an existing tired house to create a high-end contemporary home









# OUR PROJECTS

## HILLFIELD HOUSE

Maidstone, Kent

### PLANNING APPROVED

2019

### SCOPE OF WORK

RIBA Work Stages 1- 4

### DESCRIPTION

Conversion and two storey side and rear extension with a double height glazed feature to create a contemporary, open plan and multi use spaces.



# OUR PROJECTS

## BROGDALE ROAD

Faversham, Kent

### COMPLETION YEAR

2015-2016

### SCOPE OF WORK

RIBA Work Stages 1-7

### DESCRIPTION

This scheme is for a single storey extension along a residential street in Faversham to create contemporary, light and airy space overlooking the garden.



# OUR PROJECTS

## MAIDSTONE NEW BUILD

### SCOPE OF WORK

RIBA Work Stages 1-2

### DESCRIPTION

A detached eco-friendly home designed within an open site near Maidstone.



# OUR PROJECTS

## WAINSCOTT

Rochester, Kent

### COMPLETION YEAR

2017

### SCOPE OF WORK

RIBA Work Stages 2-7

### DESCRIPTION

An internal remodelling project, transforming this family home by knocking through three separate rooms and reconfiguring the space to create an open planned, contemporary and light kitchen, dining and living area.



# OUR PROJECTS

## BROADWATER DOWN

Tunbridge Wells, Kent

PLANNING APPROVED

2022

SCOPE OF WORK

RIBA Work Stages 1-4

### DESCRIPTION

A two storey rear extension to create an open plan kitchen/dining/living arrangement, garage conversion and new glazing features, plus external garden works



# OUR PROJECTS

## FOLKESTONE NEW BUILD

PLANNING APPROVED

2018

SCOPE OF WORK

RIBA Work Stages 1-4

### DESCRIPTION

New build contemporary home with sustainability features, including a green wall, on excess garden land.





# OUR PROJECTS

## SHOTTENDON

Wye, Kent

### SCOPE OF WORK

RIBA Work Stages 1-3

### DESCRIPTION

An eco friendly and sustainable single storey home



# OUR PROJECTS

## WEST KINGSDOWN

### COMPLETION YEAR

2020

### SCOPE OF WORK

RIBA Work Stages 1-4

### DESCRIPTION

Extension of existing bungalow, into a contemporary, high quality family home, featuring lots of natural light throughout.



# OUR PROJECTS

## EAST FARLEIGH

Maidstone, Kent

### SCOPE OF WORK

RIBA Work Stages 1-3

### DESCRIPTION

A detached home set upon a sloping site, with various sustainability features with views to River Medway.



## TUNBRIDGE WELLS

### PLANNING APPROVED

2018

### SCOPE OF WORK

RIBA Work Stages 1-3

### DESCRIPTION

A new 5 bedroom contemporary detached home on excess garden land.



# OUR PROJECTS

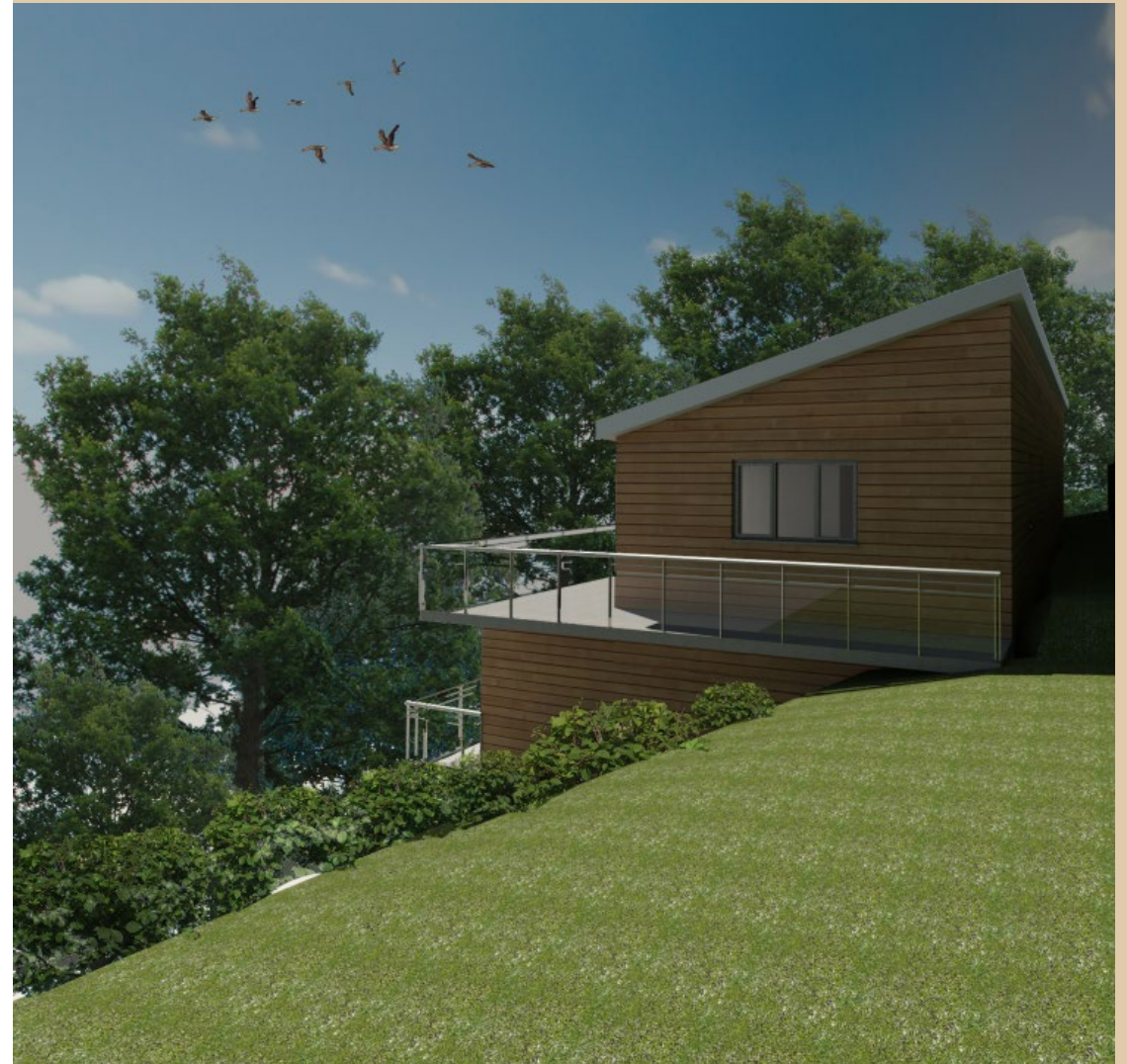
## RADNOR CLIFF

Sandgate, Folkestone

COMPLETION YEAR	SCOPE OF WORK
Ongoing	RIBA Work Stages 1-3

### DESCRIPTION

New build contemporary home situated upon a steep cliff in Folkestone with views out to the English Channel



# OUR PROJECTS

## LENHAM HEATH

### DESCRIPTION

Two stunning new build contemporary homes, with an open patio and dining area. One of the homes is designed to be accessible compliant for the user.

### SCOPE OF WORK

RIBA Work Stages 1-3



# OUR PROJECTS

## JULIAN ROAD

### COMPLETION YEAR

2013

### SCOPE OF WORK

RIBA Work Stages 1-3

### DESCRIPTION

A new build detached 5 bed family home constructed from SIP Panels.



## ASHFORD ROAD

*Bearsted, Kent*

### COMPLETION YEAR

2016

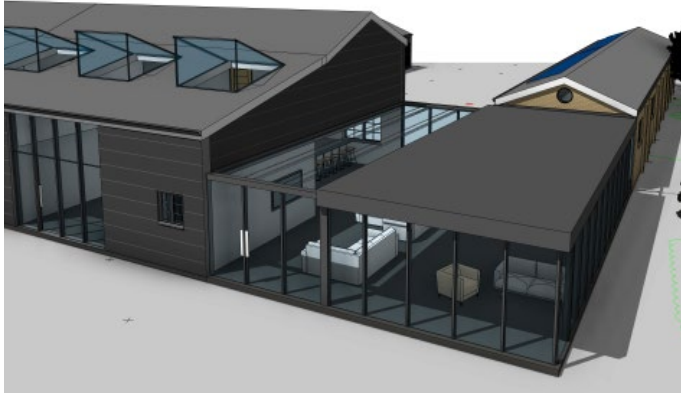
### SCOPE OF WORK

RIBA Work Stages 1-7

### DESCRIPTION

A two storey extension and internal remodelling to create more contemporary rooms and better links with the garden

# OUR PROJECTS



# OUR PROJECTS



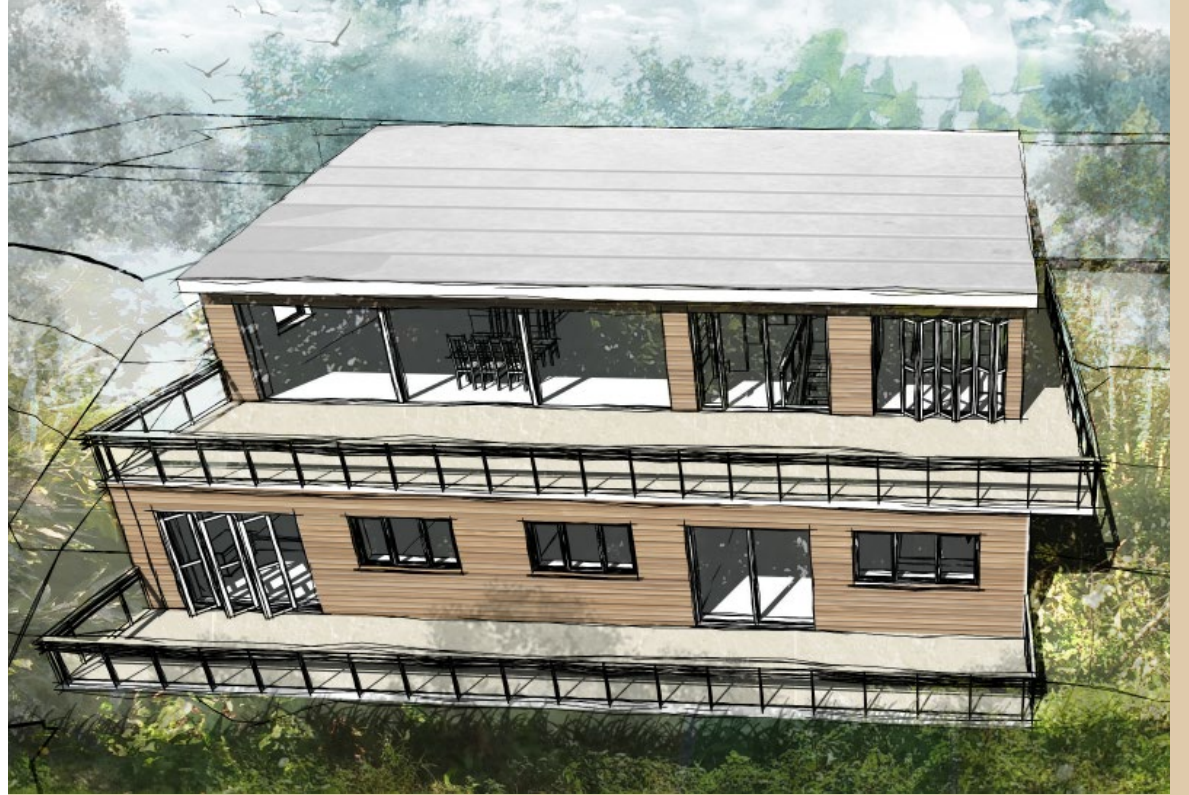


# INTERIORS



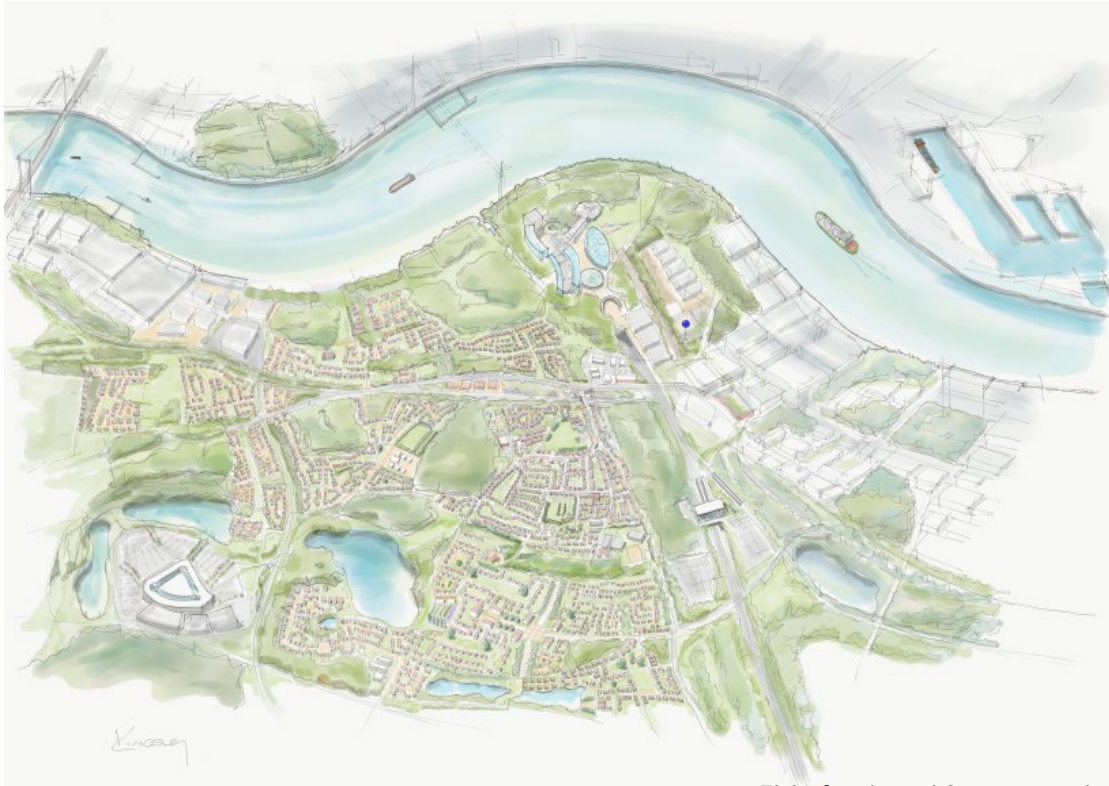
# VISUALISATIONS





# HAND SKETCHES

Sketches produced for our schemes



*Ebbsfleet and Swanscombe*



*Defining private garden space for apartments scheme*

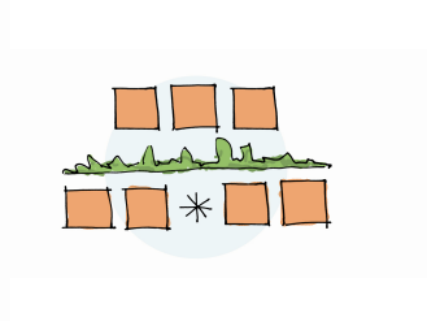
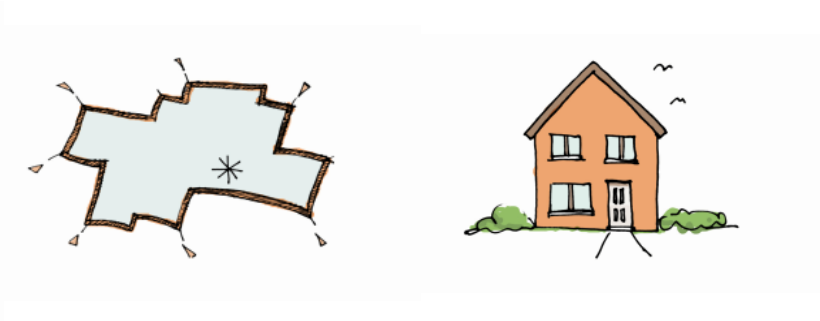
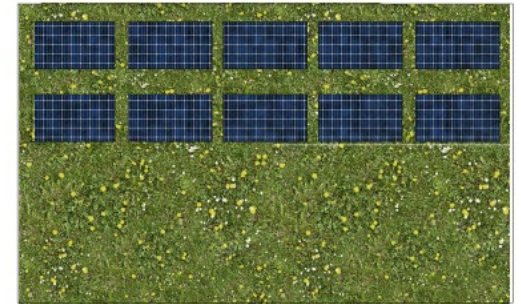


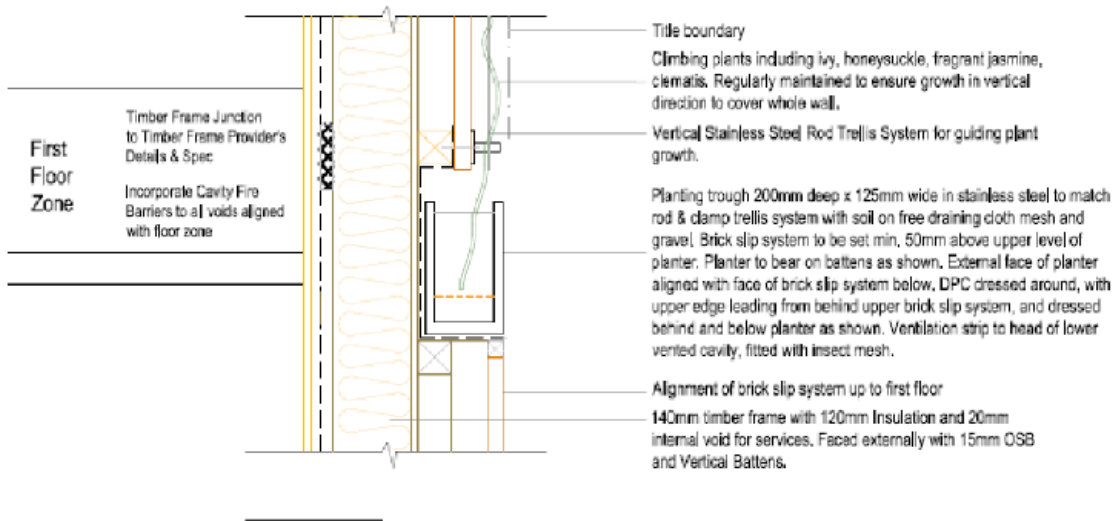
*Attention to highways detail*

# HAND SKETCHES

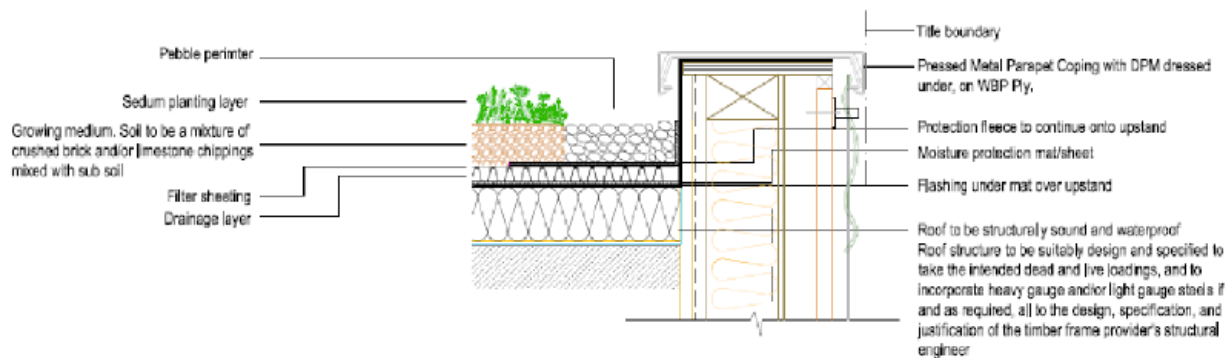


# SUSTAINABILITY





DETAILED SECTION OF PLANTING TROUGH AT INTERFACE OF GROUND FLOOR LEVEL AND FIRST FLOOR LEVEL



SEDUM GREEN ROOF SECTION ON GREEN WALL SIDE - SOUTH FACING SIMILAR TO STANDARD DETAIL BUT WITH GREEN WALL AGAINST FACE



# ON SITE







# DESIGNSCAPE'S CLIMATE INITIATIVE

## OPERATIONAL ENERGY



### RENEWABLES

WE IMPLEMENT RENEWABLE SOURCES OF ELECTRICITY AND HEATING WITHIN OUR DESIGNS, INCLUDING SOLAR AND HEAT PUMPS.

### VENTILATION & HEAT RECOVERY

WE ENCOURAGE THE USE OF MVHR SYSTEMS TO PROVIDE FRESH, CLEAN AIR, AT REASONABLE TEMPERATURES.

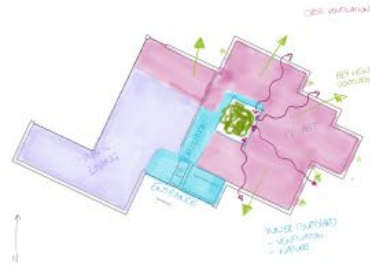


## HEALTH & WELLBEING

### HEALTH METRICS

IN EVERY PROJECT, WE CONSIDER OUR HEALTH METRICS OF:

- DAYLIGHT
- VIEWS TO NATURE
- FRESH AIR
- LANDSCAPE FEATURES



## STUDIO



### DAIRY-FREE

WE UNDERSTAND ONE OF THE BIGGEST CHANGES YOU CAN MAKE FOR THE CLIMATE IS WHAT YOU CONSUME. THAT'S WHY FOR THE LAST 5 YEARS, WE'VE BEEN A DAIRY FREE OFFICE

### PLANTS

WE ENCOURAGE NATURE IN OUR WORKPLACE WITH POTTED PLANTS



### REMOTE WORKING

WE ENCOURAGE REMOTE WORKING, THEREBY REDUCING EMISSIONS FROM OUR STAFF'S COMMUTES

## FABRIC FIRST & EMBODIED ENERGY

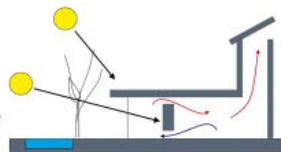


### MATERIALITY

WE ENCOURAGE MORE SUSTAINABLE MATERIALS WITH LOWER EMBODIED ENERGY, AND METHODS TO INCREASE INSULATION AND HEAT LOSS.

### FABRIC FIRST

WE APPROACH EACH DESIGN WITH FABRIC FIRST, TO MAXIMISE AIR TIGHTNESS, NATURAL VENTILATION, OPTIMISE SOLAR GAINS AND USE HIGH INSULATION



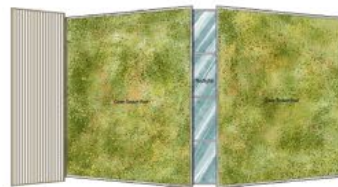
## BIODIVERSITY & NATURE BASED SOLUTIONS

### BIODIVERSITY

WE SIGNIFICANTLY ENHANCE A SITE'S BIODIVERSITY NET GAIN AND GREEN COVER COMPARED TO PRE-DEVELOPMENT LEVELS, IN ALL OF OUR PROJECTS.

### GREEN FEATURES

WE IMPLEMENT GREENERY WHEREVER POSSIBLE INCLUDING GREEN WALLS AND ROOFS



Roof Plan

## WATER MANAGEMENT



### RAINWATER HARVESTING

WE HAVE A COMMITMENT TO MINIMISE WATER DEMAND BY HARVESTING RAINWATER AND RECYCLING AND REUSING WATER ON SITE.

### REDUCING WATER USAGE TARGETS

WE RESEARCH PRODUCTS AND SYSTEMS WHICH USE LOWER AMOUNTS OF WATER, WITH AN AIM OF USING 40% LESS WATER THAN THE CURRENT BUILDING REGS

**75L** P/P P/D  
TARGET

# TESTIMONIALS

“ ”

We have a beautiful 1960's build house but it is in need of updating to make it more contemporary and so it flows better to suit our needs on a day to day basis.

We've never used an architect before and we were a little nervous about entering the unknown. I met Charn and immediately I was put at ease by her manner.

Her eye for great design and the excitement she showed about making our home perfect was so obvious. We've since had a second site visit where Charn and Kingsley talked about our home with as much passion as us.

Designscape really listened to the things we love, and the things we can't get quite right with the existing house.

We are still at the early stages of design, but the concept ideas they have come up with really capture our style and vision. Their passion, professionalism, communication and ideas have not disappointed and we look forward to working with them as we move onto the next phase of our project.

Would thoroughly recommend Designscape.

---

Residential client, Maidstone, April 2021

“ ”

We have been impressed with the service. Communication has been excellent throughout the planning stages and have everything we needed in the architectural plans. The advice has also been excellent and have already recommended their services to our friends and family.

---

“ ”

Cannot recommend Designscape Architects enough. Without them we wouldn't be living in our dream home. From beginning to end they have given us their expertise, support and contacts to achieve our vision.

Thankyou

---

Residential extension and remodel, Chatham, 2019.

“ ”

We have a detached Victorian house and were looking for an architect who would design a modern extension to the side of the property. We had a few architects who designed pastiches which we did not want.

When we first met with Kingsley, he immediately understood our brief and had numerous ideas. From the beginning of the project, communication was clear and open. He took our integrated ideas through to design, planning and appeal.

Kingsley was upfront about the design and that it may need to go through the appeal process. His appeal was clear, concise and agreed. Kingsley recommend materials to use and tradesmen.

The service we received was professional, our needs were translated into a creative design that we love and the process of planning was managed well by Designscape who's services I am happy to highly recommend.

---

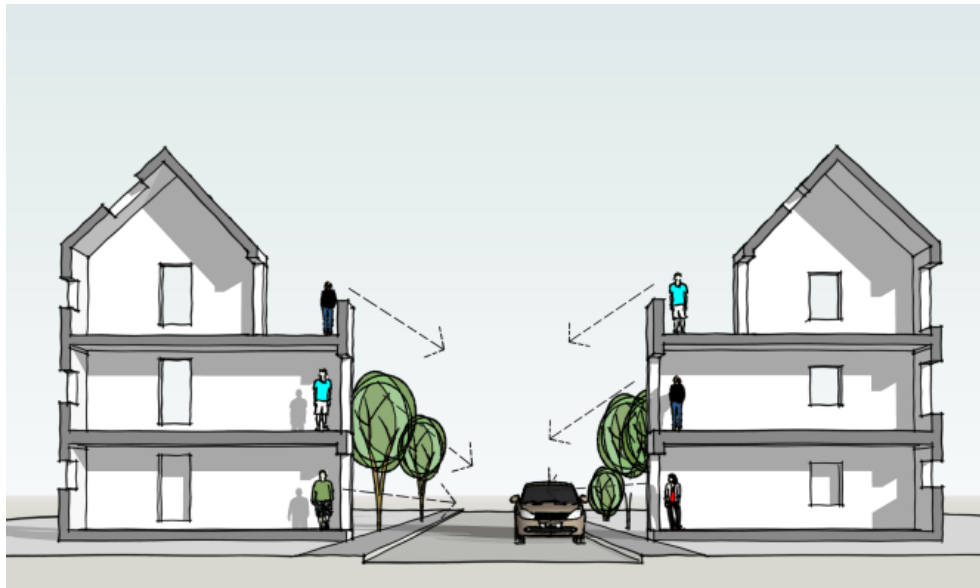
Residential extension, Faversham, 2016.

# RESIDENTIAL DESIGN GUIDE- LONDON BOROUGH OF REDBRIDGE

We were commissioned by Redbridge Council to assist them in bringing forward their Residential Design Guide SPD which was adopted in 2019.

The key emphasis was on the development of brownfield land and helping ensure the best possible use of that land through medium-to-high density with “intensification” or “densification”.

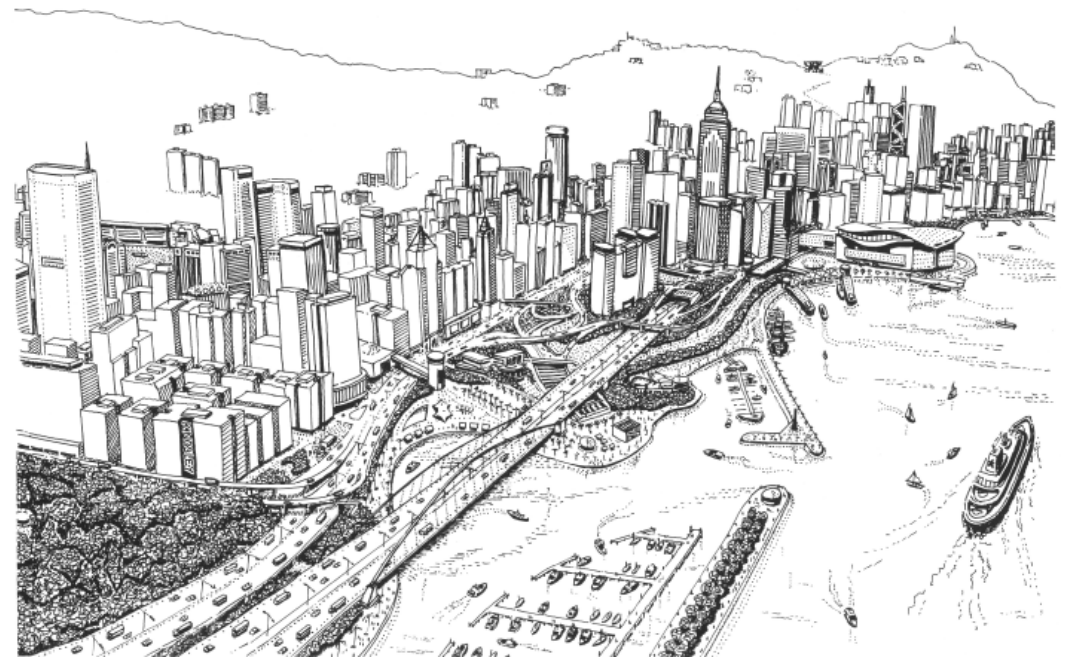
We produced scheme ideas of how this could be achieved and also produced the graphics which referred, and which are incorporated within their final design guidance document.



## INTERNATIONAL OUTLOOK

At Designscape Consultancy we maintain a strong international outlook in our work. The founder, Kingsley Hughes, has gained many years of experience from working overseas, in Sydney and in Hong Kong where he worked on many residential schemes and was a part-time lecturer at the University of Hong Kong. He also was the Urban Design advisor to the Hong Kong Government and the project manager of the Government's "Urban Design Guidelines for Hong Kong".

The other members of our team also bring a strong international outlook and experience: Viktor in Slovakia and Panagiota in Greece. Furthermore, Charn Murphy-York carries out work in Africa through her charity PIFTA, which is featured overleaf.



# PIFTA – PAYING IT FORWARD TO AFRICA

One of our senior staff members, Charn Murphy-York set up and runs PIFTA with her father to fund and deliver various charitable services in The Gambia, West Africa, to inspire and improve the lives of many.

The charity has a strong focus on aiding sustainable change through student sponsorship, business start-ups, food and clothing donations and construction of business premises and homes.

Annual trips to the region and local fundraising assist in social and economic projects, with a focus on education and long term growth.

More info can be found at [www.pifta.co.uk](http://www.pifta.co.uk)







SEPTEMBER 2022